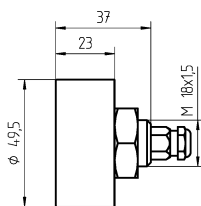


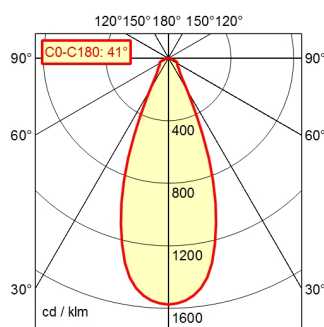
Surface-mounted luminaire HEAD LED MCAYL 4 S

113155000-00669609



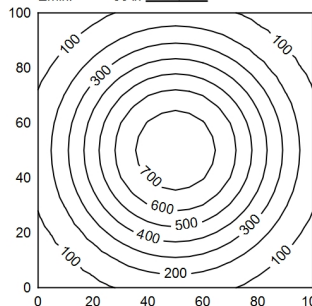
Serie 763

A60 | 100.0% Φ : 500 lm



100 x 100 cm Φ : 500 lm

Em: 333 lx
Emax: 753 lx
Emin: 56 lx



H Φ : 500 lm E | 0° D

Height (m)	Beam Diameter (m)	Light Intensity (lx)
0.50 m	0.38 m	3151 lx
1.00 m	0.75 m	788 lx
1.50 m	1.13 m	350 lx
2.00 m	1.51 m	197 lx

Light source	LED
Work equipment	Without
Connected load	16 - 32 V; DC
Power consumption	ca. 5,5 W
Luminous flux	approx. 500 lm
Luminous efficiency	approx. 90 lm/W
Light type/-color	Daylight
Colour temperatur	approx. 6.500 K
Color rendering index	CRI \geq 80; R9 \geq 10
Light distribution	Narrow-beam; Direct; Symmetric
Beam angle	40°
Chromaticity tolerance LED	< 6 SDCM
Glare control	Fresnel screen
Luminance (L65)	\leq 80.000 cd/m ²
Unified glare rating (4H 8H)	\leq 28
System of protection	IP 67
Class of protection	III
Technology	Switchable; -
Operation	External
Housing	Aluminium; Anodised; Silver metallic
Light source cover	Borosilicate
Weight (net)	ca. 0,2 kg
Mains lead	ca. 0,15 m; Built-in plug; Serie 763
Design	mounted version
Fastening	Screwing
Maximum ambient temperature	25 °C
Special features	Spot